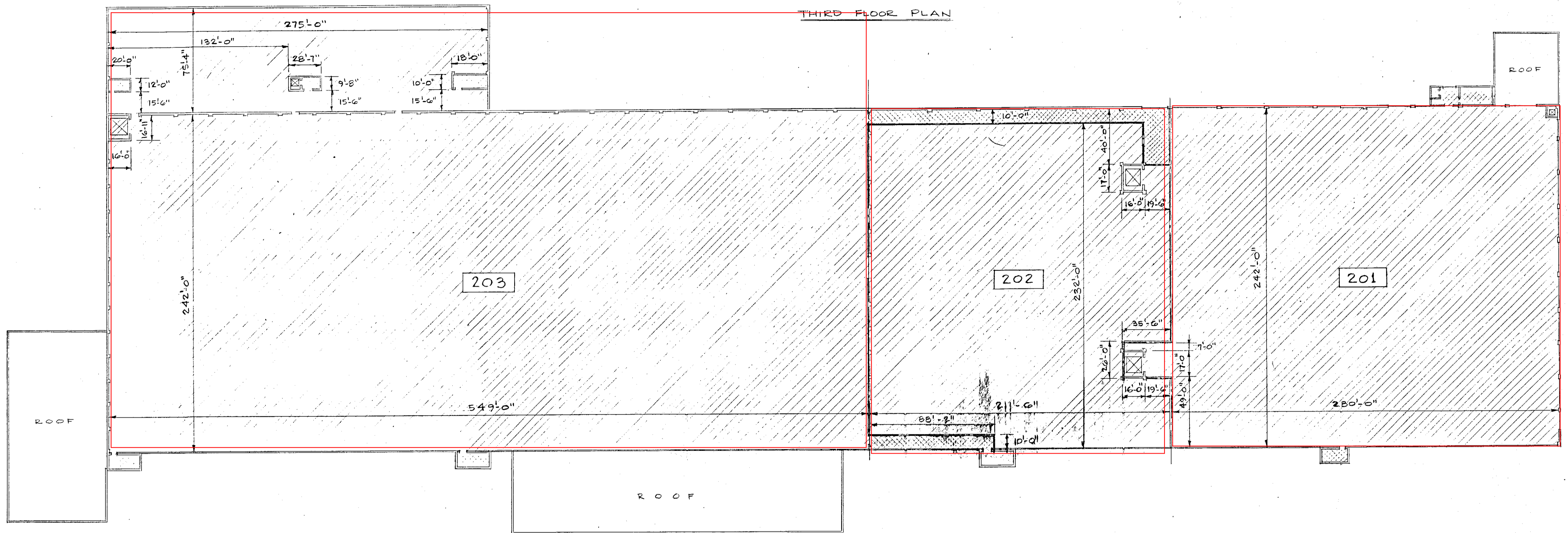
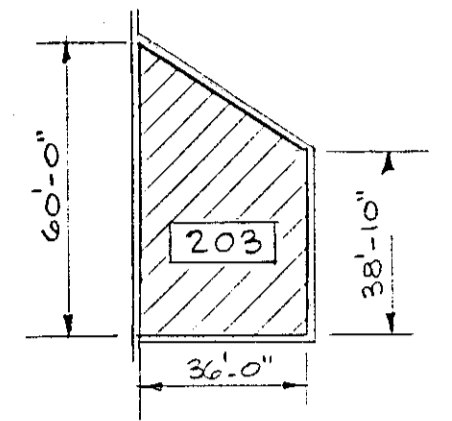
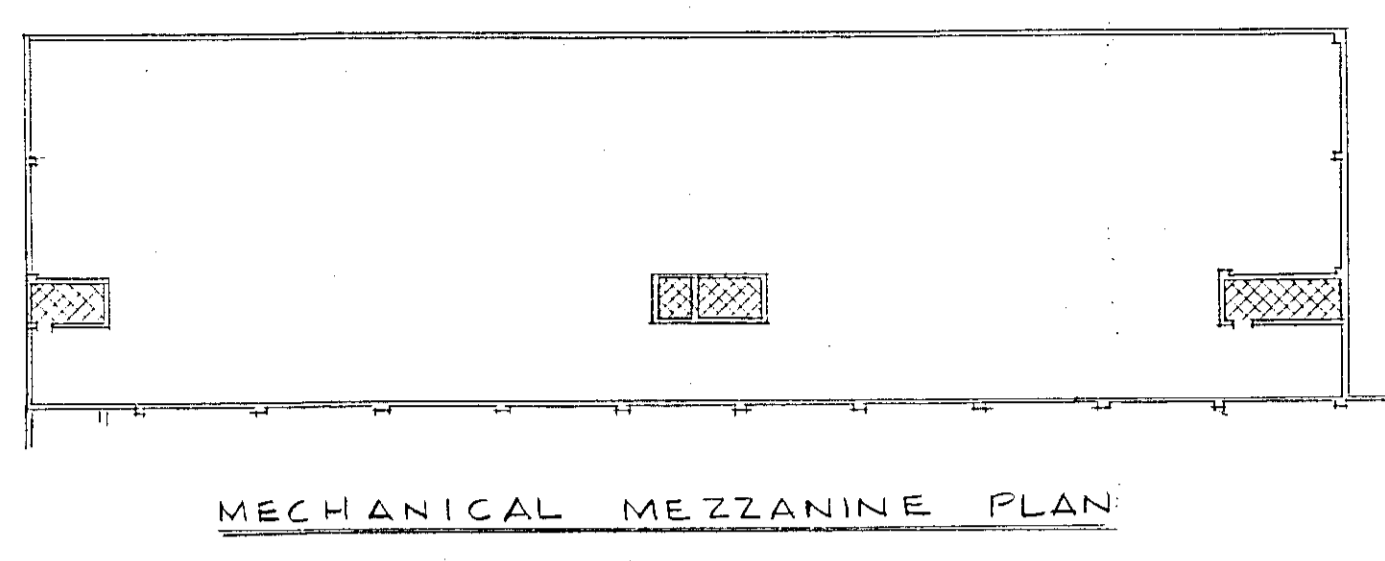


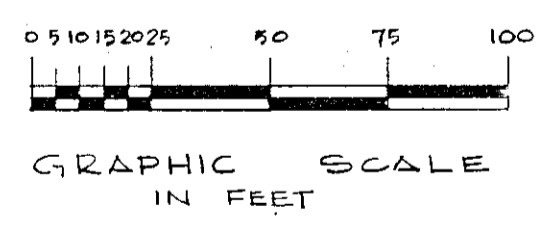
| SCHEDULE OF UNIT AREAS | |
|------------------------|-----------------|
| UNIT DESIGNATION | UNIT AREA |
| 200 | 3,652 SQ. FT. |
| 201 | 73,586 SQ. FT. |
| 202 | 48,762 SQ. FT. |
| 203 | 156,642 SQ. FT. |



SECOND FLOOR PLAN

LEGEND

- COMMON ELEMENT AREA
- UNIT AREA
- LIMITED COMMON ELEMENT AREA
- UNIT AREA THAT COULD BE REMOVED AND CONVERTED TO COMMON ELEMENT AREA
- COMMON ELEMENT AREA THAT COULD BE CONVERTED TO LIMITED COMMON ELEMENT AREA
- UNIT NUMBER
- UNIT DESIGNATION



NOTE:
ALL CONDITIONS AND MEASUREMENTS MUST BE VERIFIED AT THE BUILDING BEFORE PROCEEDING WITH THE WORK.

DECLARATION PLAN
NAME BY WHICH PROPERTY WILL BE KNOWN:
"CURTIS PARK CONDOMINIUM"
LOT #1 SECTION D FOLCROFT EAST INDUSTRIAL PARK
SHARON HILL BOROUGH, DELAWARE COUNTY, PENNA.

DAGIT ASSOCIATES
300 S. HENDERSON ROAD KING OF PRUSSIA, PA. 19406
REGISTERED ARCHITECTS
ALBERT F. DAGIT, JR. DANIEL C. DAGIT JOHN T. EDWARDS, JR.

| | | | |
|--|--|--|--|
| | | | |
| | | | |
| | | | |

| DATE | REVISIONS |
|----------|--|
| 11 05 01 | ADD EXIT ACCESS CORRIDORS THRU UNIT 200 - REISSUE |
| 11 27 01 | ADD TO UNIT AREAS - REISSUE |
| 12 24 01 | ADD TO UNIT AREAS 201, 202 & 203 REVISE SCHEDULE - REISSUE |
| 1 07 04 | ADD UNIT 200 TO SCHEDULE REISSUE |

| DATE | SCALE |
|---------------|-----------|
| DEC. 11, 1986 | 1"=40'-0" |
| | |

DRAWING NO.
203