

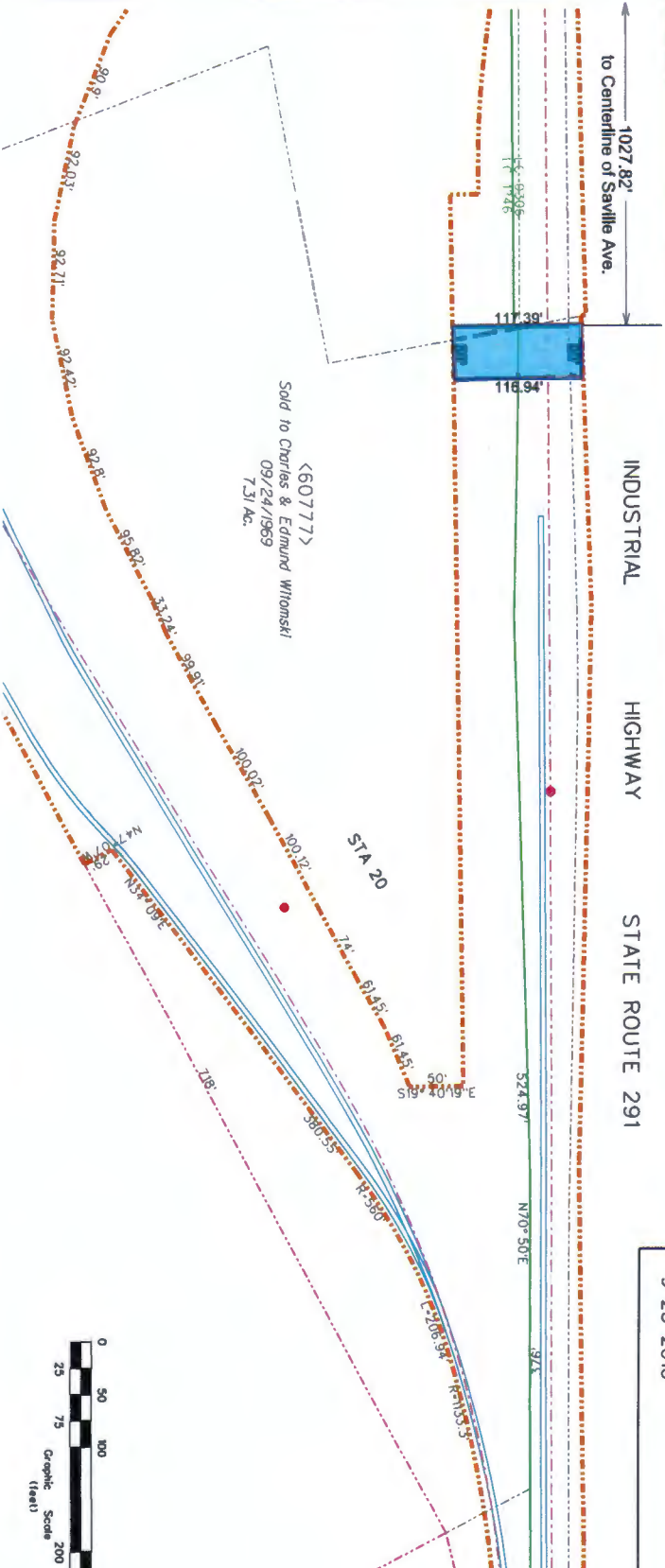


**PROPOSED DRIVEWAY EASEMENT  
TO CARL ABBONIZIO**

**AREA = 5858 Sq. Ft.**

**INDUSTRIAL HIGHWAY STATE ROUTE 291**

1027.82'  
to Centerline of Saville Ave.



REAL ESTATE DEPARTMENT

FORMER RAILROAD---PB&W/RDG RR  
 BRANCH---CHESTER I.T.  
 LOCATION---EDDYSTONE, PA  
 LINE CODE---1246/0306 MP---9.45  
 MAP---2.04(7081)/1 & 23P(8123)/19-20  
 FILENAME---124600300.dgn  
 DOCUMENT NO.---PBW/RDG-CRC-RP-79/7

9-23-2016

EXHIBIT "A" -2